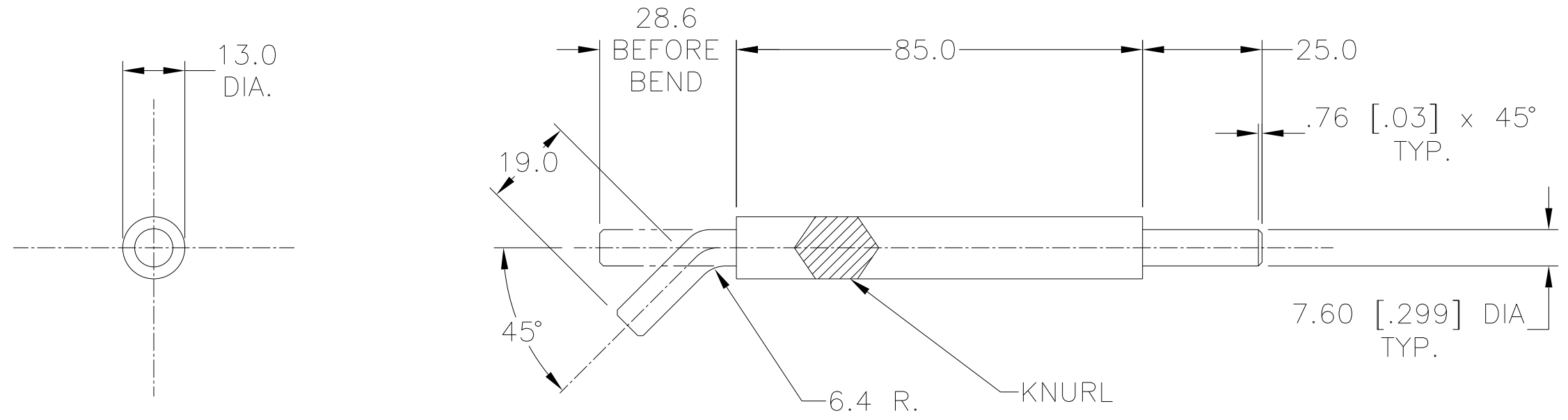


SYM	CHANGES	DATE	BY



DET	SHT	AMT	DESCRIPTION	MAT'L
BILL OF MATERIAL				
NOTICE : THIS DRAWING IS THE PROPERTY OF E&E ENGINEERING INCORPORATED INCLUDING THE PRINCIPLES OF THE DESIGN INVOLVED, AND IS SUBMITTED WITH AGREEMENT THAT IT IS NOT TO BE REPRODUCED, COPIED, OR LOANED, IN PART OR WHOLE. ACCEPTANCE OF THIS DRAWING WILL BE CONSTRUED AS AN AGREEMENT TO THE ABOVE				
TITLE			KNURLED WRENCH	
PART NO.			EM-233-085-008	
DRAWN BY: TONI		CHK'D BY: G.A.		APPR'D BY: GLA
DATE: 30JAN01		DATE: 30JAN01		DATE: 30JAN01

IF CAD DRAWN, MANUAL CHANGES ARE PROHIBITED

UNLESS OTHERWISE SPECIFIED:

.5 RAD. MAX. FILLET ON ALL INSIDE CORNERS

REMOVE ALL BURRS AND BREAK SHARP EDGES

CHAMFER ALL TAPPED HOLES 45° TO 1 MM OVER TAP SIZE

GEOMETRIC DRAWING SYMBOLS

▭ FLAT	⌒ PROFILE OF A SURFACE
— STRAIGHT	⊕ TRUE POSITION
∟ ANGULAR	⊕ SYMMETRICAL
⊥ SQUARE	↗ RUNOUT CIR.
// PARALLEL	↗ TOTAL RUNOUT
○ ROUND	□ BASIC DIM. (.000)
○ CYLINDRICAL	□ REF. DIM. (.000)
◎ CONCENTRIC	
⌒ PROFILE OF A LINE	
Ⓜ MAXIMUM MATERIAL CONDITION (MMC)	
Ⓢ REGARDLESS OF FEATURE SIZE (RFS)	
Ⓟ PROJECTED TOLERANCE ZONE	

METRIC

3RD ANGLE PROJECTION

DO NOT SCALE

MACHINING TOLERANCE MILLIMETERS

1 PLACE DEC. ±.3



E-900.042.004

