

ORDERING INFORMATION

ELJ - [] - [] - [] - [] 0 0

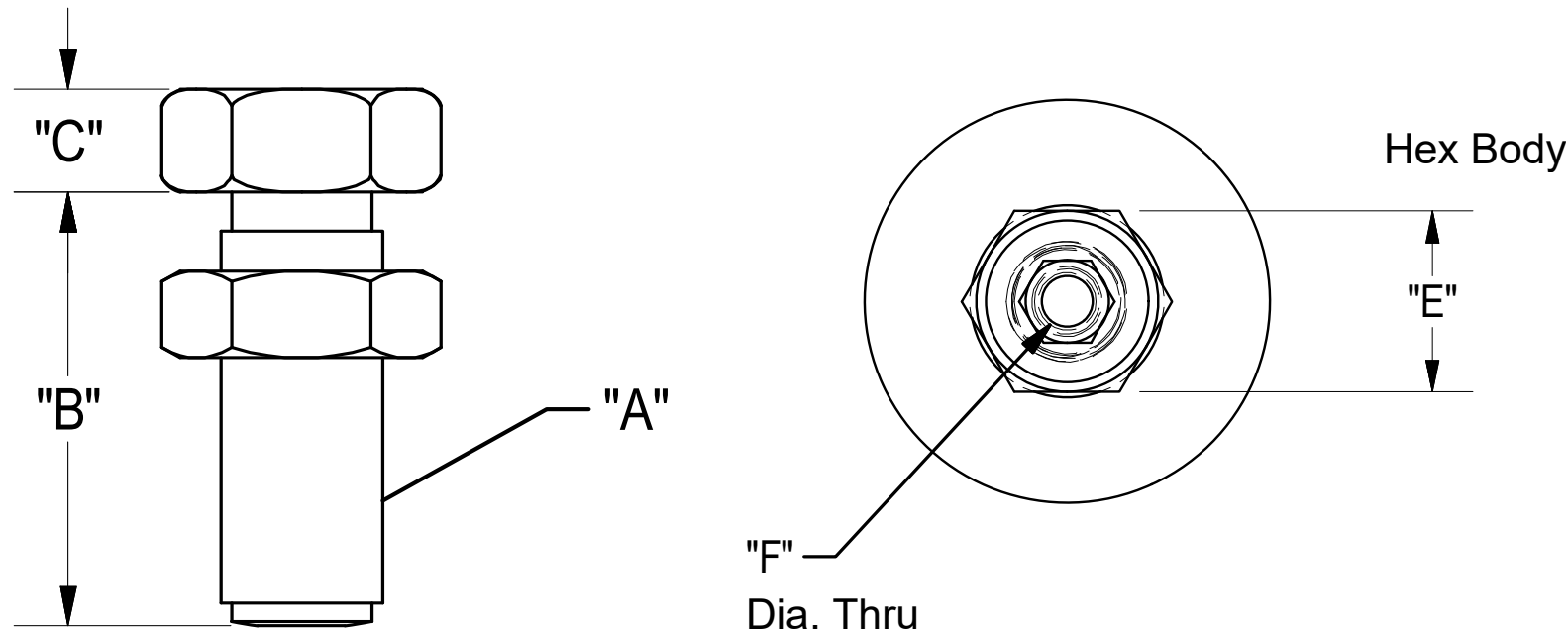
Thread Dia
075, 100, 112, 150

Body Length
213, 319, 362, 538

Thread Type
C Coarse
F Fine

Anchor Option
0 None

Mounting Base Option
0 None



OPTIONS 0,0 (BASIC)

A	B	C	E	F
3/4-10	2-1/8	1/2	1-1/8	13/32
3/4-16	2-1/8	1/2	1-1/8	13/32
1-8	3-3/16	5/8	1-1/8	9/16
1-14	3-3/16	5/8	1-1/8	9/16
1-1/8-7	3-5/8	5/8	1-5/8	9/16
1-1/8-12	3-5/8	5/8	1-5/8	9/16
1-1/8-7	5-3/8	5/8	1-5/8	9/16
1-1/8-12	5-3/8	5/8	1-5/8	9/16
1-1/2-6	3-5/8	5/8	1-5/8	7/8
1-1/2-12	3-5/8	5/8	1-5/8	7/8
1-1/2-6	5-3/8	5/8	1-5/8	7/8
1-1/2-12	5-3/8	5/8	1-5/8	7/8

 7200 MILLER DR. WARREN, MI 48092 EESP.CO	NOTICE: THIS DRAWING IS PROPERTY OF E&E SPECIAL PRODUCTS INCLUDING THE PRINCIPLES OF THE DESIGN INVOLVED, AND IS SUBMITTED WITH AGREEMENT THAT IT IS NOT TO BE REPRODUCED, COPIED, OR LOANED, IN PART OR WHOLE, ACCEPTANCE OF THIS DRAWING WILL BE CONSTRUED AS AN AGREEMENT TO THE ABOVE		
	TITLE ENGLISH "BASIC" LEVELING JACKS		
	PART NO.		
	DRAWN BY: DATE: 8/25/2020 SCALE: 1/2 SHT 1 OF 1	CHK'D BY: EC DATE: 9/28/2020	APPR'D BY: MH DATE: 9/28/2020
DWG. NO. ELJ- TEMPALTE			