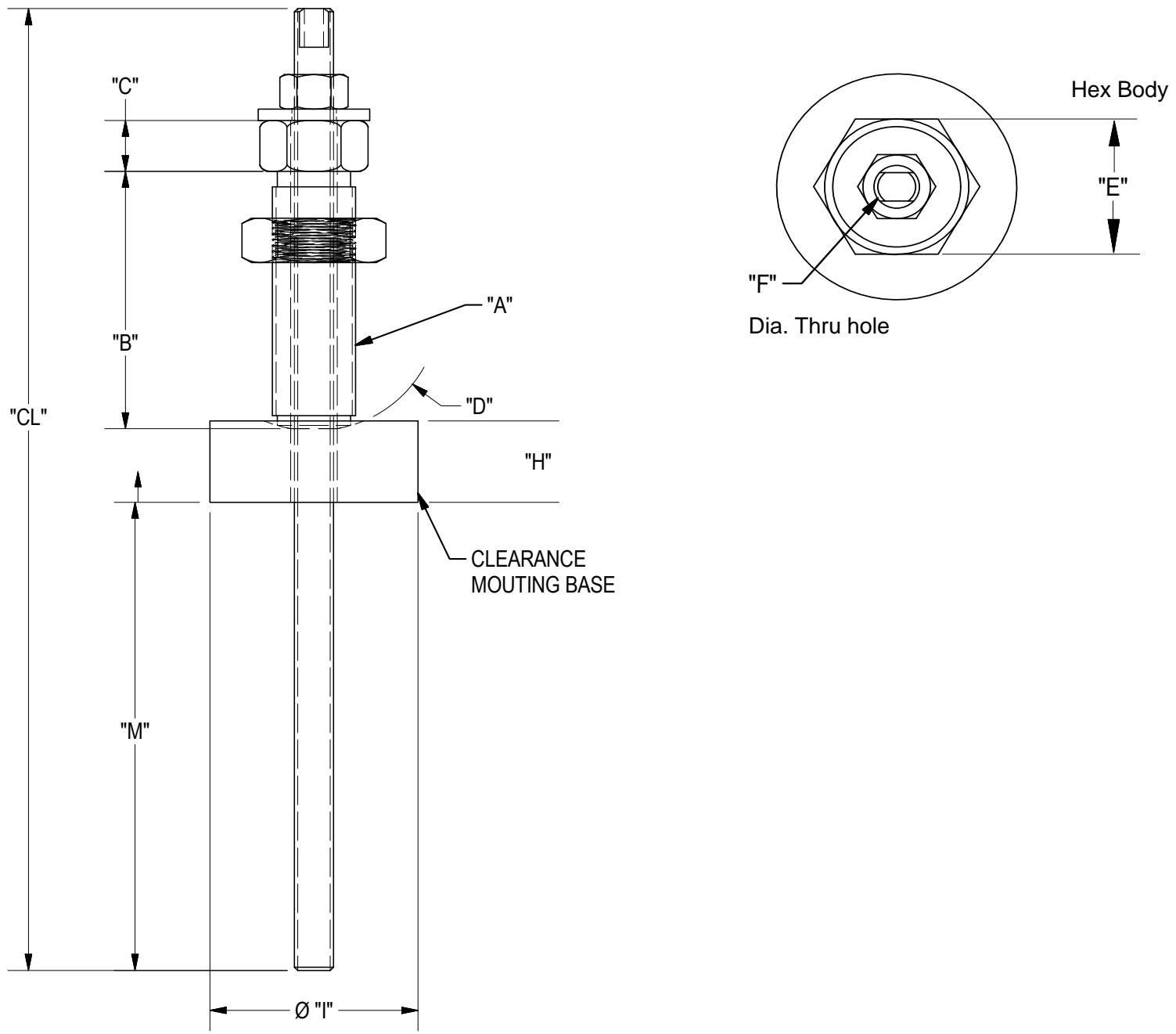


|     |         |      |    |
|-----|---------|------|----|
| SYM | CHANGES | DATE | BY |
|-----|---------|------|----|



### ORDERING INFORMATION

ELJ - [ ] - [ ] - [ ] - [ ] - [ ]

**Thread Dia**  
075, 100, 112, 150

**Body Length**  
213, 319, 362, 538

**Thread Type**  
C Coarse  
F Fine

**Anchor Option**  
A Anchor Screw, Jam Nut, Flat Washer

**Mounting Base Option**  
C Clearance

| A        | B      | C   | D     | E     | F     | ZINC PLATED<br>NO OIL | EXPOXY ANCHOR |       | M    |   |           |
|----------|--------|-----|-------|-------|-------|-----------------------|---------------|-------|------|---|-----------|
|          |        |     |       |       |       | CL                    | H             | DIA I |      | DRILL SIZE  | MIN DEPTH |
| 3/4-10   | 2-1/8  | 1/2 | 1-1/2 | 1-1/8 | 13/32 | 255mm                 | 1             | 2     | 10mm | TBD.<br>By<br>customer<br>at install.<br><br>Click here<br>for more<br>info | 5-1/2     |
| 3/4-16   | 2-1/8  | 1/2 | 1-1/2 | 1-1/8 | 13/32 | 255mm                 | 1             | 2     | 10mm |   | 5-1/2     |
| 1-8      | 3-3/16 | 5/8 | 1-1/2 | 1-1/8 | 9/16  | 300mm                 | 1             | 2-1/2 | 14mm |   | 5-3/4     |
| 1-14     | 3-3/16 | 5/8 | 1-1/2 | 1-1/8 | 9/16  | 300mm                 | 1             | 2-1/2 | 14mm |   | 5-3/4     |
| 1-1/8-7  | 3-5/8  | 5/8 | 1-1/2 | 1-5/8 | 9/16  | 300mm                 | 1             | 2-1/2 | 14mm |   | 5-1/2     |
| 1-1/8-12 | 3-5/8  | 5/8 | 1-1/2 | 1-5/8 | 9/16  | 300mm                 | 1             | 2-1/2 | 14mm |   | 5-1/2     |
| 1-1/8-7  | 5-3/8  | 5/8 | 1-1/2 | 1-5/8 | 9/16  | 345mm                 | 1             | 2-1/2 | 14mm |   | 5-1/2     |
| 1-1/8-12 | 5-3/8  | 5/8 | 1-1/2 | 1-5/8 | 9/16  | 345mm                 | 1             | 2-1/2 | 14mm |   | 5-1/2     |
| 1-1/2-6  | 3-5/8  | 5/8 | 2-1/4 | 1-5/8 | 7/8   | 345mm                 | 1             | 3-1/2 | 22mm |   | 6-1/2     |
| 1-1/2-12 | 3-5/8  | 5/8 | 2-1/4 | 1-5/8 | 7/8   | 345mm                 | 1             | 3-1/2 | 22mm |   | 6-1/2     |
| 1-1/2-6  | 5-3/8  | 5/8 | 2-1/4 | 1-5/8 | 7/8   | 345mm                 | 1             | 3-1/2 | 22mm |   | 4-1/2     |
| 1-1/2-12 | 5-3/8  | 5/8 | 2-1/4 | 1-5/8 | 7/8   | 345mm                 | 1             | 3-1/2 | 22mm |   | 4-1/2     |

NOTICE: THIS DRAWING IS PROPERTY OF E&E SPECIAL PRODUCTS INCLUDING THE PRINCIPLES OF THE DESIGN INVOLVED, AND IS SUBMITTED WITH AGREEMENT THAT IT IS NOT TO BE REPRODUCED, COPIED, OR LOANED, IN PART OR WHOLE, ACCEPTANCE OF THIS DRAWING WILL BE CONSTRUED AS AN AGREEMENT TO THE ABOVE

**TITLE** ENGLISH EPOXY LEVELING JACKS

**PART NO.**

|                          |                               |                        |
|--------------------------|-------------------------------|------------------------|
| <b>DRAWN BY:</b>         | <b>CHK'D BY:</b> EC           | <b>APPR'D BY:</b> MH   |
| <b>DATE:</b> 8/25/2020   | <b>DATE:</b> 10/8/2020        | <b>DATE:</b> 10/8/2020 |
| <b>SCALE:</b> 1/2        | <b>DWG. NO.</b> ELJ- TEMPALTE |                        |
| <b>SHT</b> 1 <b>OF</b> 1 |                               |                        |

7200 MILLER DR.  
WARREN, MI 48092  
EESP.CO