

ORDERING INFORMATION

ELJ	-							
-----	---	--	--	--	--	--	--	--

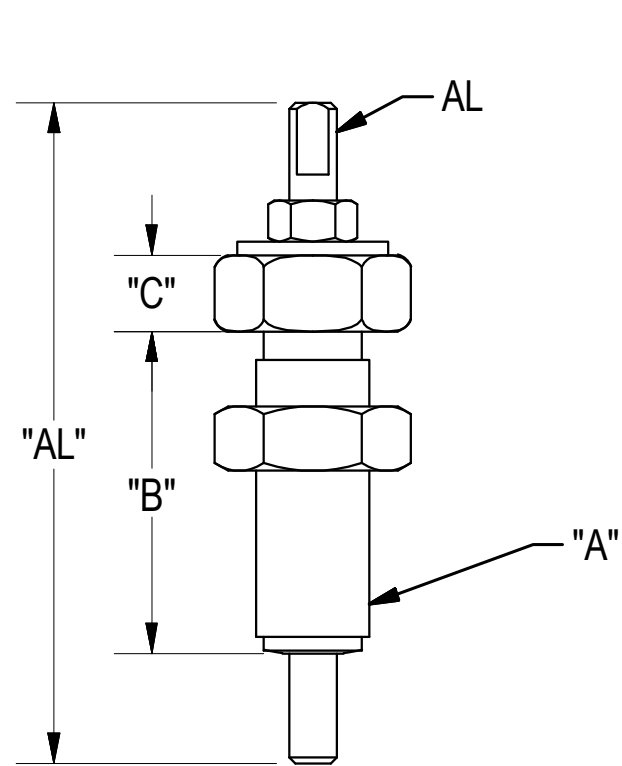
Thread Dia
075, 100, 112, 150

Body Length
213, 319, 362, 538

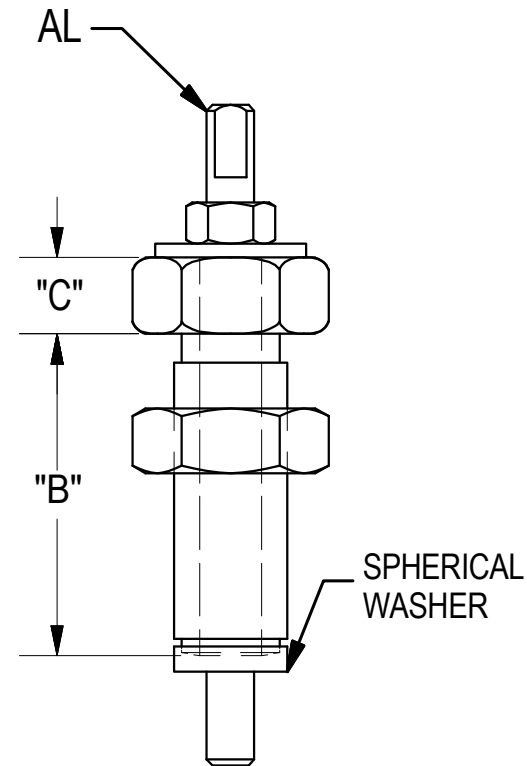
Thread Type
C Coarse
F Fine

Anchor Option
A Anchor Screw, Jam Nut, Flat Washer

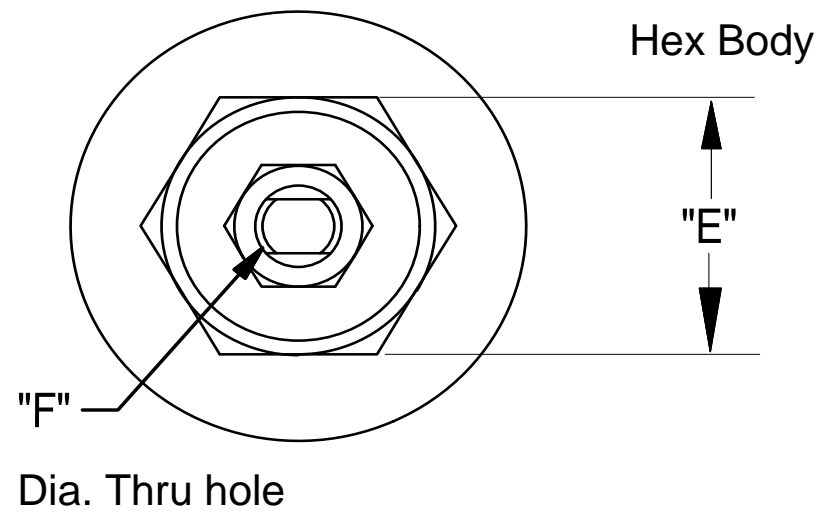
Mounting Base Option
0 None
W Spherical Washer



OPTIONS A,0
(Applications with Existing Base)



OPTIONS A,W
(Applications with Existing Taps)



						BLACK OXIDE
A	B	C	E	F	AL	
3/4-10	2-1/8	1/2	1-1/8	13/32	110mm	
3/4-16	2-1/8	1/2	1-1/8	13/32	110mm	
1-8	3-3/16	5/8	1-1/8	9/16	170mm	
1-14	3-3/16	5/8	1-1/8	9/16	170mm	
1-1/8-7	3-5/8	5/8	1-5/8	9/16	170mm	
1-1/8-12	3-5/8	5/8	1-5/8	9/16	170mm	
1-1/8-7	5-3/8	5/8	1-5/8	9/16	215mm	
1-1/8-12	5-3/8	5/8	1-5/8	9/16	215mm	
1-1/2-6	3-5/8	5/8	1-5/8	7/8	190mm	
1-1/2-12	3-5/8	5/8	1-5/8	7/8	190mm	
1-1/2-6	5-3/8	5/8	1-5/8	7/8	230mm	
1-1/2-12	5-3/8	5/8	1-5/8	7/8	230mm	

 7200 MILLER DR. WARREN, MI 48092 EESP.CO	NOTICE: THIS DRAWING IS PROPERTY OF E&E SPECIAL PRODUCTS INCLUDING THE PRINCIPLES OF THE DESIGN INVOLVED, AND IS SUBMITTED WITH AGREEMENT THAT IT IS NOT TO BE REPRODUCED, COPIED, OR LOANED, IN PART OR WHOLE, ACCEPTANCE OF THIS DRAWING WILL BE CONSTRUED AS AN AGREEMENT TO THE ABOVE.		
	TITLE ENGLISH "EXISTING BASE / TAPS" LEVELING JACKS		
	PART NO.		
	DRAWN BY:	CHK'D BY: EC	APPR'D BY: MH
	DATE: 8/25/2020	DATE: 9/28/2020	DATE: 9/28/2020
SCALE: 1/2	DWG. NO. ELJ- TEMPALTE		
SHT 1 OF 1			